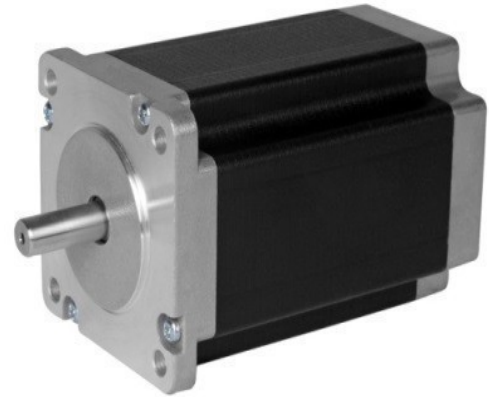


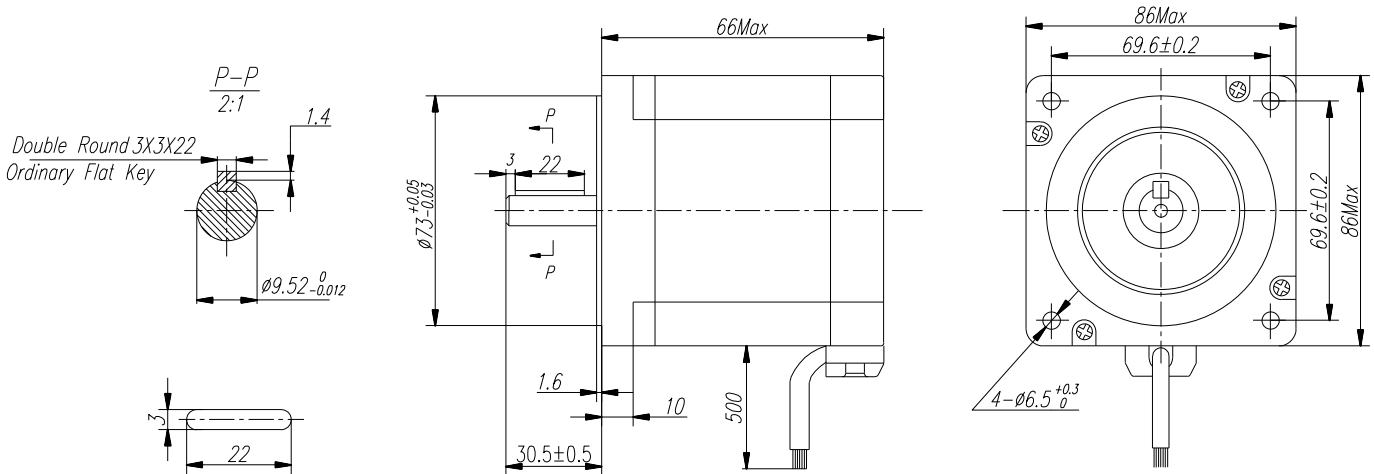
Step Angle	1.8°
Step Angle Accuracy	±5% (full step, no load)
Resistance Accuracy	±10%
Inductance Accuracy	±20%
Temperature Rise	80 °C Max.(rated current, 2 phase on)
Ambient Temperature	-20 °C ~ +50 °C
Insulation Resistance	100 MΩ Min., 500VDC
Dielectric Strength	820VAC, 1s, 3mA
Shaft Radial Play	0.02 Max. (450 g-load)
Shaft Axial Play	0.08 Max. (920 g-load)



Specifications

Model	Current	Resistance	Inductance	Holding Torque	Bi/Unipolar	Detent Torque	Rotor Inertia	Weight	Length
	A/∅	Ω/∅	mH/∅	N.cm	# of Leads	N.cm	g.cm <sup>2</sup>	kg	mm
SLP 3426 380 8AR00	3.8	0.6	3.5	310	Bi-P (8)	5.5	850	2.0	66
	1.9	2.4	14.0	310	Bi-S (8)				
	2.7	1.2	3.5	220	Uni (8)				

Mechanical Dimension



Wiring Diagram

