



SONCEBOZ

► Hybrid stepper motors

6600-15



ROBUSTNESS



HIGH PROTECTION DEGREES



ACCURACY

- Step angle..... 1.8°
- Size 57.2 mm
- Weight 370 g
- Holding torque ... 540/385 mNm

The hybrid stepper motor comes into its own where torque at low speed, positioning, and accuracy are determining factors..

► Technical data

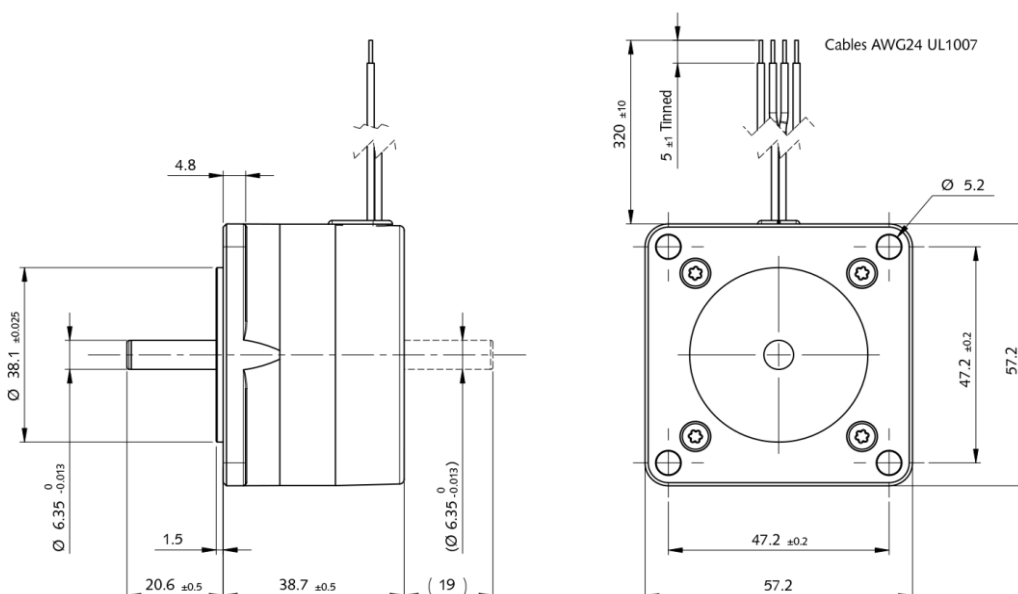
	Part N°	Phase resistance [Ω]	Phase inductance [mH]	Phase current [A]	Holding torque [mNm]	Nominal power [W]
Bipolar	6600-15-2-1.6 6600R030*	1.6	3.5	1.5	540	7.2
Unipolar	6600-15-4-1.6 6600R031	1.6	1.7	1.5	385	7.2

* 6600R188 double ended shaft

Steps/rev.	200
Step accuracy	± 5%
Rotor inertia	131 gcm²
Insulation class	B 130 °C
Protection	DIN 40050 IP 30
Test voltage	500 VAC
Detent torque	26 mNm

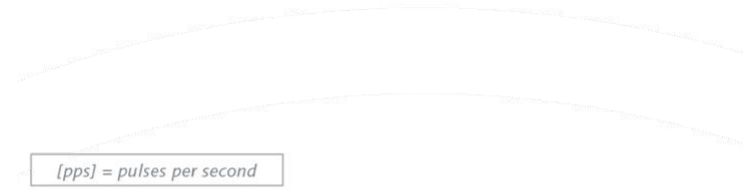
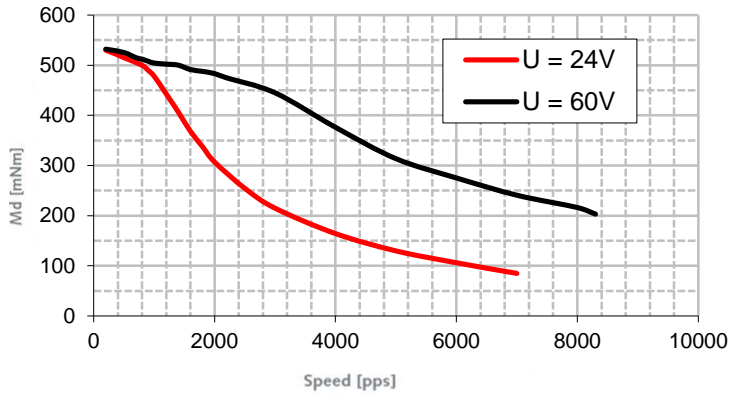
► Dimensions

Drawing not to scale. All dimensions in mm.

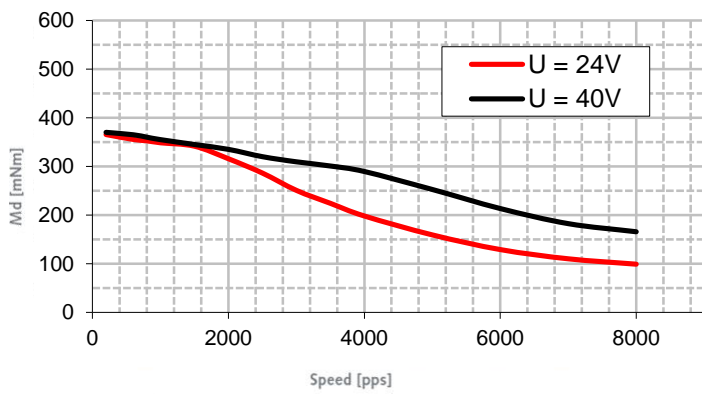


► Dynamic characteristics

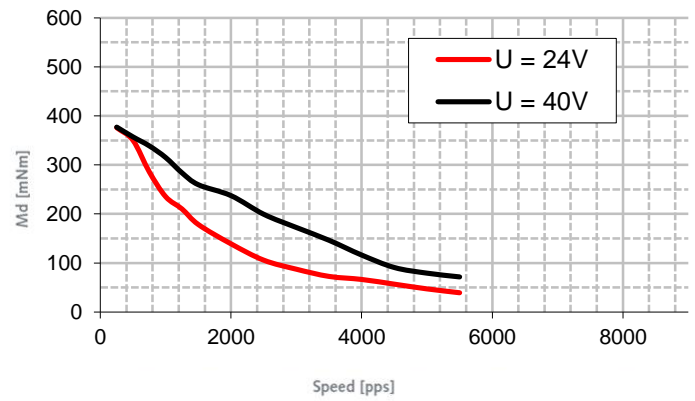
• 6600-15-2-1.6



• 6600-15-4-1.6

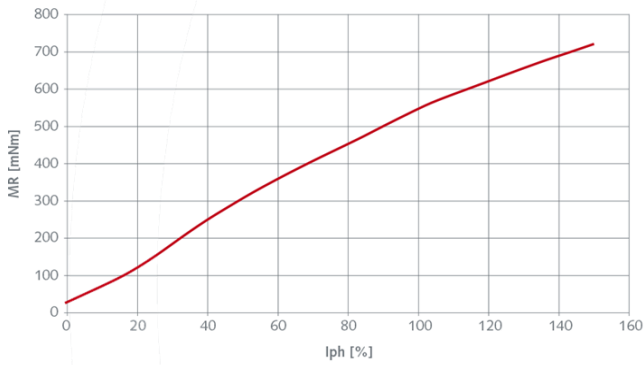


• 6600-15-4-13.5

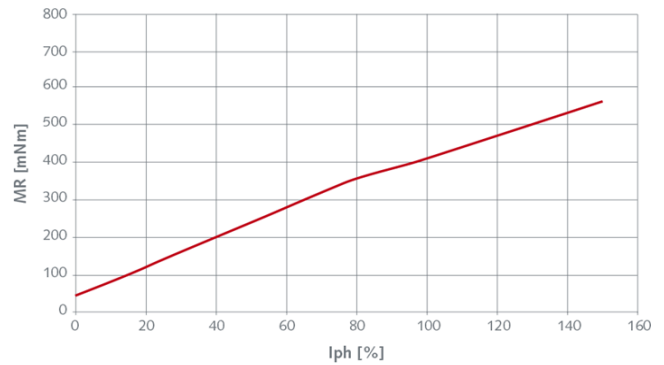


► Static characteristics

• 6600-15-2 Series

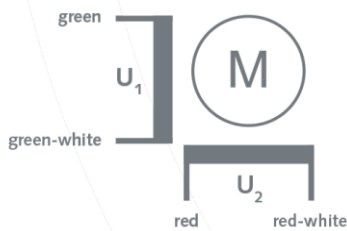


• 6600-15-4 Series



► Electrical Interface

• Bipolar



• Unipolar

